

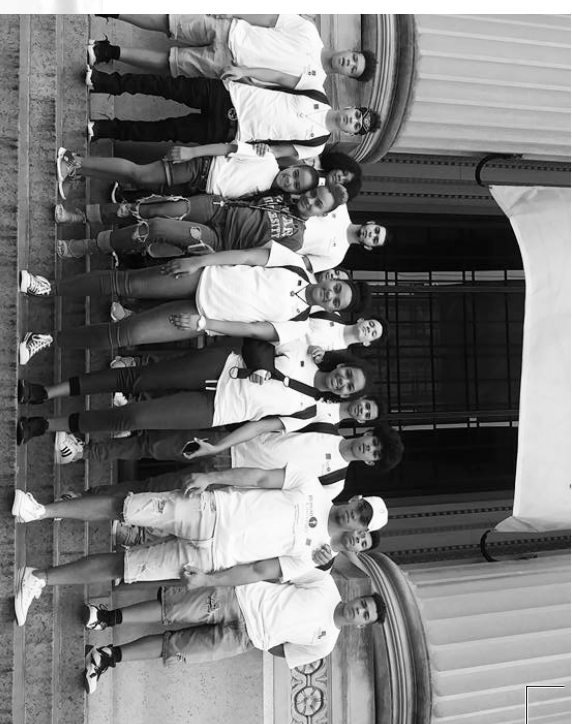
## How do I qualify for the program?

- Must be a citizen or a permanent resident of the USA and reside in Camden City.
- Student must be in grades 9th or 10th to begin the program (students remain in the program until they complete postsecondary education).
- Enrolled in the ESL program at the high school or in need of English acquisition
- Minimum GPA of 2.0
- Teacher/or Counselor recommendations
- Low-income and/or first generation college bound
- Desire to pursue higher education/college

### Are you interested in...

- Going to college
- Increasing your English speaking skills
- Improving your grades, test scores and study habits
- Going on educational/field trips for free
- Participating in a 6 week summer program
- Meeting new people

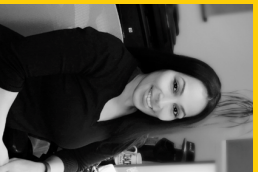
Then Rowan University's Upward Bound Program for ELLs is the program for YOU!



# UPWARD BOUND

## For more information:

Upward Bound is here to help you! Schedule an appointment to discuss preparing for college.



Contact Dr. Margarita Olivencia to schedule an appointment.

Margarita Olivencia, Ed.D  
Upward Bound Coordinator

Email: [olivencia@rowan.edu](mailto:olivencia@rowan.edu)  
Phone: 856-361-2937



Upward Bound for English Language Learners  
Rowan University at Camden  
129 North Broadway, 3rd Floor  
Camden, New Jersey 08102



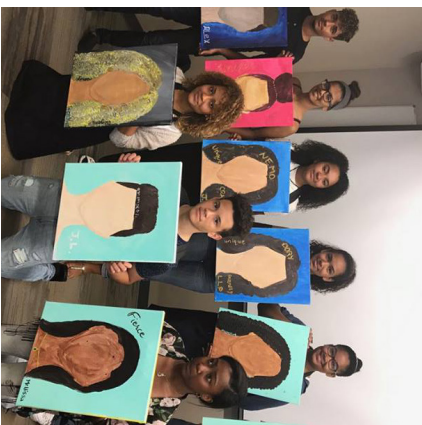
## About

The Upward Bound for ELLs Program provides fundamental support to participants in their preparation for college entrance. The program provides opportunities for participants to succeed in their precollege performance and ultimately in their higher education pursuits. The goal of Upward Bound for ELLs is to increase the rate at which participants complete secondary education and enroll in and graduate from institutions of postsecondary education with a bachelor's degree.

The Rowan University Upward Bound for ELLs at Camden is unique in that it specifically serves English Language Learners in the Camden high schools that come from low-income families and are first-generation college bound. Recognizing the need for these students to enhance both their content knowledge and language proficiency, the academic courses offered through Upward Bound for ELLs use content-based instruction approach, which focuses on English language acquisition while providing much needed content knowledge.

## Academic Component

RU UB Project activities run September through May in the Learning Center located on the Rowan University - Camden Campus two (2) Saturdays a month from 9:00 a.m. to 3:00 p.m. on during the Academic Component and weekday afternoons on Mondays- Thursdays from 4:00 p.m. to 6:00 p.m. and/or at Woodrow Wilson High School.



The academic component includes:

- After school homework and tutoring program
- In-class tutoring support
- Saturday academic classes at Rowan in Camden:
  - Computers/Media Technology
  - Art/Visual Effects
  - Science
  - Math
  - English
  - Foreign Language
- Leadership training activities
- Cultural field trips
- Bilingual mentors
- Counseling, academic advisement, college preparation
- Financial aid workshops
- Social activities

## Summer Component

This is a six-week NON-RESIDENTIAL program held on the Camden campus of Rowan University Mondays- Fridays in June and July.



The summer component includes:

- Six-week intensive program
- Daily classes at Rowan in Camden
- Cultural field trips
- Social activities
- Health and fitness activities
- Overnight camping trips, and much more

## Trips & Activities

Upward Bound organizes activities and trips to help students learn more about the history and culture of United States citizens. Some past trips and activities included:

- Franklin Institute
- Underground Railroad Experience
- Amish Country
- College Tours
- Camping
- Karate Class
- Art Class

## Volunteer Opportunities

Students will participate in volunteer activities organized by Upward Bound that will give them opportunities to interact with native speakers. Upward Bound partners with local public service and organizations such as:

- Kennedy Health Heart Walk
- Camden County Partnership for Children
- Lambda Theta Phi, Mu Chapter Toy Drive
- Susan G. Komen Breast Cancer Walk
- Ronald McDonald House
- Rutgers 4-H program
- Rowan University Cooper Medical
- Rowan Students for Community Service

