

**Rowan University**

**Division of Facilities & Operations**

**West Campus Plan**

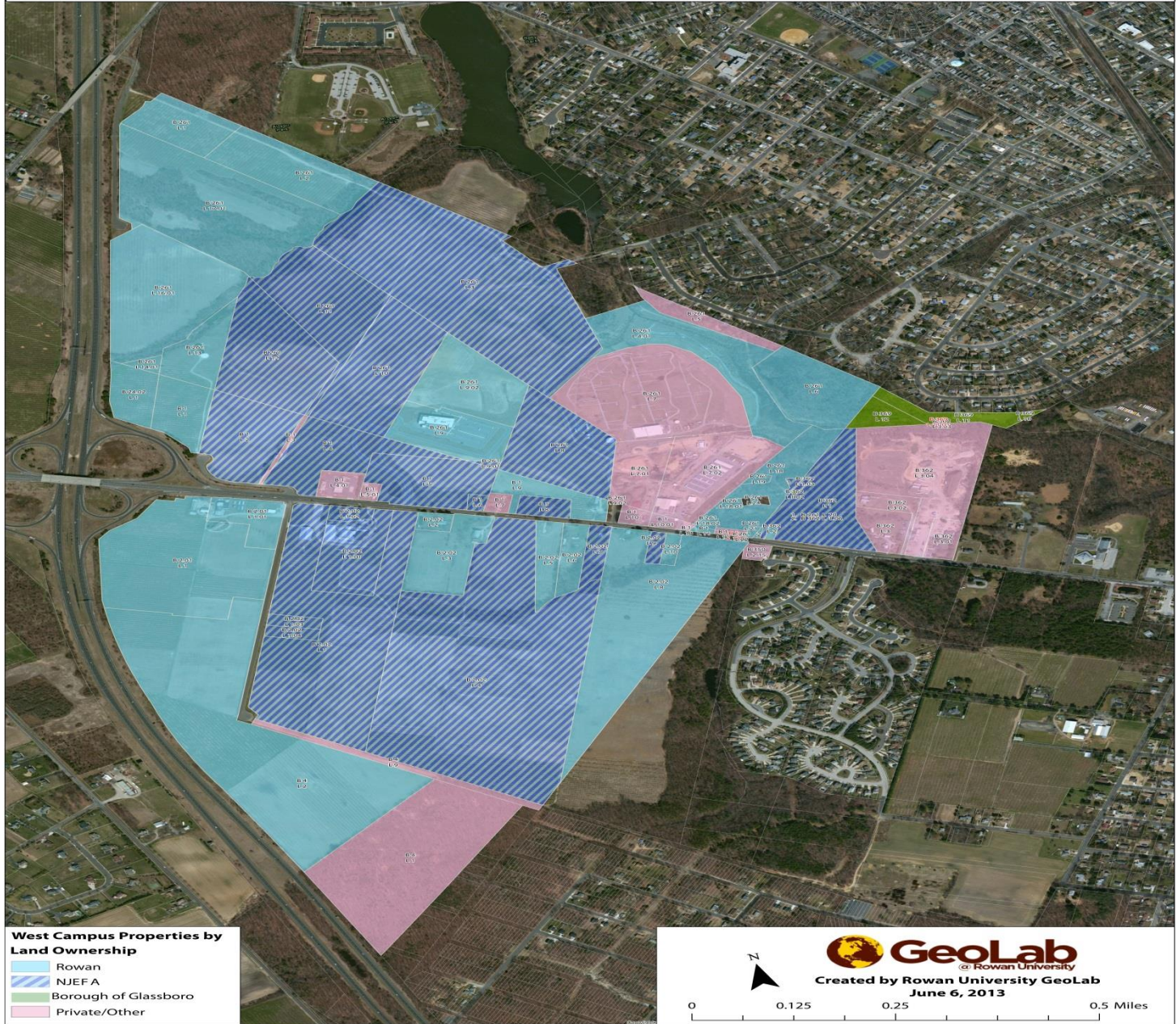
**Perspective Views**

**October 9, 2013**



Existing Conditions

# Rowan University – West Campus Property Map





**Detail Plan – North Campus**



**T1 – NJ RESEARCH/INNOVATION**  
Research/Innovation=150,000sf.  
PARKING = 500

**R1 – ROWAN RESEARCH BLDG.**  
Office= 60,000sf

**R2 – ROWAN RESEARCH BLDG**  
Technology 60,000sf

**Total = 120,000sf.**  
PARKING = 400

**Phase 1 – North Campus**



View 1, Full Build-Out, North Campus



**T1 – NJ RESEARCH/INNOVATION**  
 600,000sf.  
 PARKING = 2000

**T2 – NJ RESEARCH/INNOVATION**  
 600,000sf.  
 PARKING = 2000

**T3 – NJ RESEARCH/INNOVATION**  
 200,000 sf.  
 PARKING = 650

**T4 – NJ RESEARCH/INNOVATION**  
 100,000 sf.  
 PARKING = 350

**TOTAL – 1,500,000 sf**  
**TOTAL PARKING SPACES 5000**

**R – ROWAN RESEARCH BLDG.**  
 45,000sf. (EXISTING Bldg.)

**R1 – ROWAN RESEARCH BLDG.**  
 Office= 60,000sf

**R2 – ROWAN RESEARCH BLDG**  
 Technology=60,000sf

**R3-ROWAN RESEARCH BLDG**  
 Technology=60,000sf

**S1 – LIFE SCIENCES/WELLNESS**  
 190,000sf.  
 PARKING = 650

**TOTAL – 415,000 sf**  
**TOTAL PARKING SPACES 1,200**

**V1 – VILLAGE CENTER**  
 COMMERCIAL = 78,500sf.  
 OFFICE = 72,000sf.  
 RESIDENTIAL = 212,000sf

**V2 – VILLAGE CENTER**  
 COMMERCIAL = 47,000sf.  
 OFFICE = 85,500sf.  
 RESIDENTIAL = 542,450sf.  
 HOTEL = 234,000sf.

# Full Build Out – North Campus

**A1 – FOUR FIELD COMPLEX**  
2000 SEATS – FIELD HOCKEY/LACROSSE  
2000 SEATS SOCCER  
PARKING = 400

**A2 – INDOOR FIELD & SUPPORT FACILITY**  
PARKING = 400 (SHARED)

**A3-BASEBALL & SOFTBALL FIELDS**  
PARKING=865



Phase 1 – South Campus





View 2, Full Build-Out, South Campus



**Aerial View from South West-Complete**



- Existing Building
- Phase 1 Buildings
- Phase 1 Site Boundaries

**Aerial View from South West-Phase 1**



**Aerial View from South East-Complete**



- Existing Building
- Phase 1 Buildings
- Phase 1 Site Boundaries

**Aerial View from South East-Phase 1**



View 1, Full Build-Out, North Campus