



DRIVING DISCOVERY, TRANSFORMING TOMORROW





ROWAN IS:

**TOP 100 PUBLIC RESEARCH
UNIVERSITY**

**4TH FASTEST-GROWING RESEARCH
INSTITUTION, THREE YEARS RUNNING**

**HEADED TO RI, SOLVING
REAL-WORLD PROBLEMS**

**THE UNIVERSITY OF THE FUTURE:
STRATEGIC, SERVICE-MINDED GROWTH**

Every day, Rowan University is focused on providing high-quality education at affordable cost so ambitious students can earn degrees, conduct research that addresses real-world challenges and become productive citizens. Our graduates create businesses and produce wealth. As teachers, doctors, scientists, engineers—wherever they work and live and whatever they do—they improve life for all of us.

A handwritten signature in brown ink, reading "Ali A. Houshmand".

Ali A. Houshmand, Ph.D.
President



MORE CAPACITY TO DISCOVER, TRANSFORM AND ACHIEVE

Rowan University's dramatic and strategic transformation into one of the nation's fastest-growing public research institutions is more important than ever, not just for the University and its 23,000 students, but for all of New Jersey and the countless who rely on Rowan for education, health care, practical research and economic development.



MORE INNOVATION and ability to solve problems

During the past decade, the University has rapidly transformed into a top-100 public research institution, progressing toward achieving Carnegie R1 status, the designation for U.S. doctoral institutions with the highest research activity. In addition, Rowan is:

- the nation's fourth fastest-growing public research university (the fifth consecutive year of recognition by The Chronicle of Higher Education);
- improving medical and health care professional education with Cooper University Health Care and in a new partnership with Virtua Health;
- managing \$41.5 million in FY21 research and sponsored projects (more than \$220.63 million since 2016 with sponsors and partners including: DoD, NIH, NSF, Army, NASA, EPA and State of New Jersey);
- host of 24 entrepreneurial companies and three research centers in materials, transportation and virtual reality at South Jersey Technology Park at Rowan University.



MORE PATHWAYS

to affordable, valuable degree programs

Rowan continues to expand enrollment to meet the demand for high-quality public higher education throughout its curriculum, particularly in medicine, engineering and business. Even as its research capacity increases, Rowan remains dedicated to excellent undergraduate programs that provide students with the advantages of small classes and the resources of a large university. Enhanced by collaboration and innovation with education partners, Rowan's student-centered focus on access and affordability provides:

- tuition that has been held at or below the predicted rate of inflation for the past eight years;
- more undergraduate enrollment options through our 3+1 programs with community colleges that make a four-year degree more affordable and accessible, at about the same cost that other colleges charge for one year;
- hybrid and fully online degree programs, plus degree completion programs, professional development and stackable credentials through Rowan Global.



MORE CAPACITY

to collaborate with education, health care, corporate and industrial partners

At eight campuses and more than 100 locations, Rowan serves the region and state with access to education, research and essential health care services and programs. Committed to solving real-world problems, Rowan experts and partners are:

- creating and testing new materials and processes to improve the nation's transportation infrastructure, sustainability, biomedical sectors and more;
- conducting research at shared facilities, including the Joint Health Sciences Center in Camden, working with Rutgers-Camden, Camden County College, Cooper University Health Care, Coriell Institute and other Camden-based organizations;
- establishing the Catalysts for Sustainability program to develop, advance and communicate solutions to existential threats posed by the climate and biodiversity crises.

MORE AGILITY

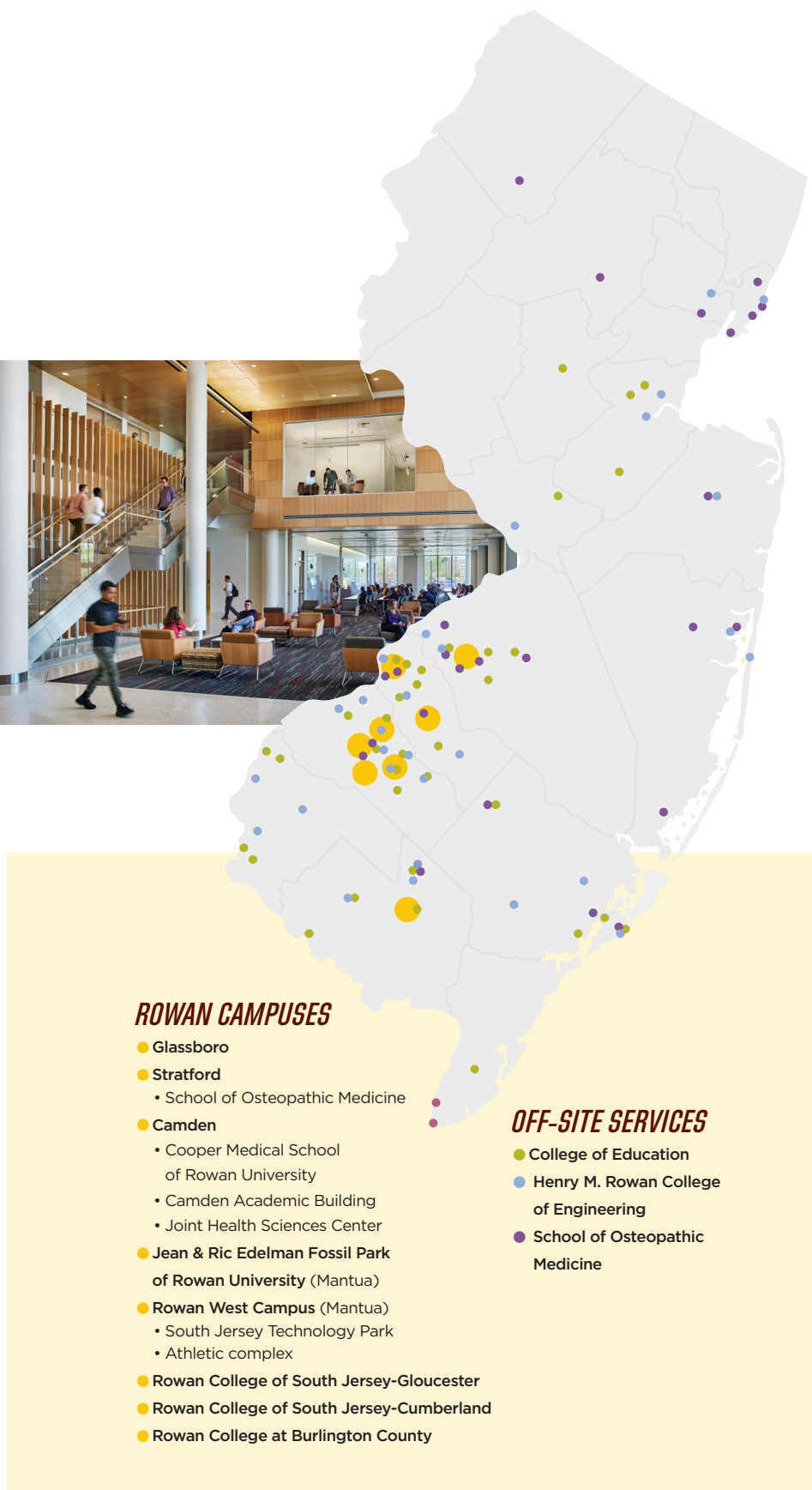
and capacity to respond and transform

Thanks to vigorous commitment to fiscal responsibility within its \$587 million operating budget, building public-private partnerships and earning significant support from donors, Rowan University is positioned with unusual agility and resources. Its most recent institutional blueprint, The University of the Future, reflects Rowan's long-standing emphasis on rethinking higher education models and transforming to anticipate and meet needs. Within this context, the University's economic impact and development prospects are significant, including:

- Rowan has undertaken \$298 million in capital investments during the past 4.5 years and has more than \$206.2 million in capital projects underway and planned for the next five years;
- in addition to direct spending by the University, Rowan affiliates and partners have completed projects closely aligned with the institution, such as the \$426 million mixed-use Rowan Boulevard and Inspira's new \$350 million hospital. Not calculated as part of Rowan's economic impact, they are just as important, and would not have happened without the University;



- avoiding debt and tuition increases to fund construction, Rowan has built campus facilities through partnerships with host communities, private investors and developers. The public-private partnerships make possible new construction and redevelopment projects designed as resources for the University and the communities it serves;
- a 2019 economic impact analysis by private research firm Econsult Solutions pegs Rowan's impact at \$1.53 billion. The University directly supports 4,460 jobs at the institution and nearly 7,000 jobs indirectly in New Jersey each year, making it a major economic development driver in the state and region;
- Rowan students spend an additional \$128 million each year throughout the state, beyond tuition, fees, room and board and alumni in New Jersey earn an additional \$197 million annually due to their Rowan degrees.





**In its accreditation review,
the Middle States Commission
on Higher Education gave
Rowan glowing remarks in
all areas, stating that Rowan
is a “model for institutional
transformation.”**

—Final MSCHE Team Report, 2019



Rowan University

OFFICE OF THE PRESIDENT

Bole Hall
201 Mullica Hill Road
Glassboro, NJ 08028
rowan.edu

