

# **Residential Learning & University Housing**

## **Orientation 2019**



**@rowanhousing**

**rowan.edu/housing**





# On-Campus Experience

Students living on campus...

- Develop a greater sense of belonging.
- Participate more in student organizations.
- Develop stronger connections to faculty.
- Earn higher GPAs.
- Are more likely graduate in 4 yrs.



# Mandatory Housing Policy

- Rowan University requires students to live in University housing or commute from their parent/legal guardian's home within 40 miles of campus until...
  - Junior Year (58 or more credits)
  - 4 semesters on campus
  - Age 21
  - Marriage

# Room Assignments

- Assignment notices sent last week of June.
- If you have not applied yet.... Apply ASAP!
- Late applications will be assigned based on availability.





# Roommate Match

- We accommodate roommate requests whenever possible
- We cannot guarantee roommate requests.
- Must have matched online by the deadline in May.
- May not match when...
  - Students do not complete the mutual match online.
  - Students are in conflicting learning communities.
  - Some other exceptional circumstances



# Accommodations



- Students with disabilities requiring housing accommodations must register with Disability Resources.
- High School accommodations do not automatically carry over to the University.
- Housing accommodations may be needed for students who have not needed accommodations in the past.
- Late requests will be accommodated based on availability.

# Traditional Halls

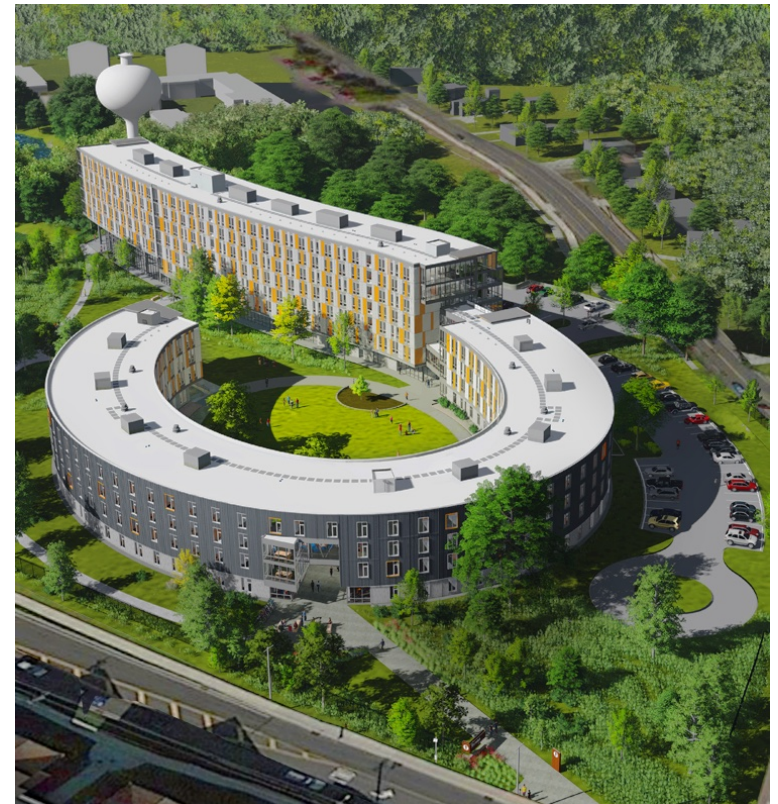
- Built 1960's - 1980's. No A/C or elevators.
- Communities formed around "Suites."
- Learning communities: ASCEND, Computer Science, Flying First, IMPACT, Leadership, Math, Social Justice, Well-Being.





# Holly Pointe Commons

- Built in 2016.
- Includes A/C and elevators.
- Learning Communities: Honors, Engineering, Pre-Med, LGBTQIA+ and Writing Arts.
- Assignment here is not guaranteed.
- Communities formed around “Pods.”



# Single Rooms

- Available in all residence halls on a limited basis.
- Priority assignments for students with disability related needs.
  - Contact Disability Resource Center ASAP if you have any disability related housing needs.
- May be assigned to other students when availability for double rooms is limited.
- Higher price:
  - Holly Pointe Single = \$5,212
  - Traditional Hall Single = \$4,860



# Rooms Changes

- Students may change their own assignment in the online system between July 1<sup>st</sup> and July 26<sup>th</sup>.
- Will see all available options. Options may be limited.
- Can swap with other willing students.
- Can request to be on a wait list in August.
- Changes will then be based on availability.

# Cleaning

- We deliver clean rooms at move-in.
- Common areas of buildings including bathrooms in most buildings are cleaned by housekeeping.
- Student rooms and bathrooms in Mimosa, Evergreen, and Mullica are the student's responsibility to clean in cooperation with roommates.



# Fire Safety

- Fire safety is a high priority!
- We have highly sensitive alarm systems... for your **SAFETY!**
- Students must make smart choices to avoid causing unnecessary risks and nuisance alarms.
- Inspections are done every semester to enforce health and safety policies.



# Fire Safety

- Extension cords are **PROHIBITED!!**
- Curtains, flags and wall hanging tapestries must be treated with NFPA 701 compliant fire resistant coatings.
- Power strips with surge protectors are the **ONLY** approved way to extend power from the wall.



# Renter's Insurance

- The University does NOT insure students' personal property.
- Students are encouraged to obtain a renter's insurance policy to protect personal property.
- Many companies provide insurance at nominal cost.





# Pets

- Most pets are not permitted.
- Students may have fish in a 10 gallon or smaller aquarium.
- Service or emotional support animals for students with disabilities must be approved and registered through Disability Resources.



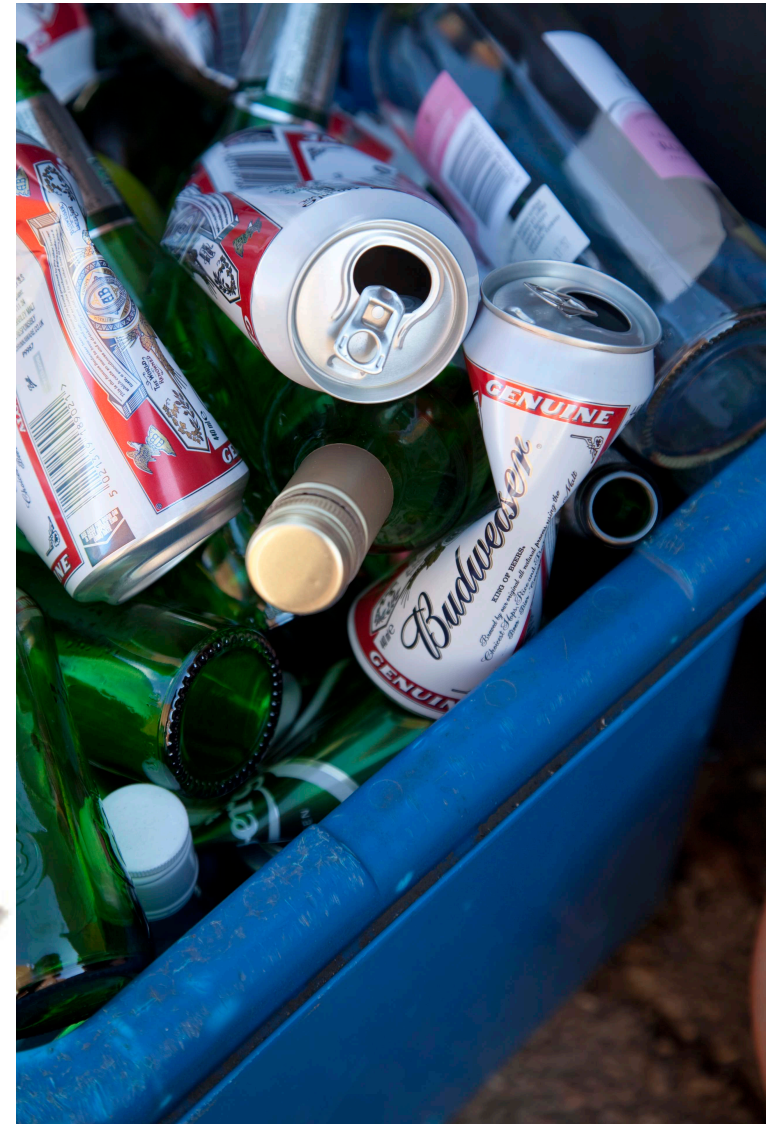
# Weapons Prohibited

- No weapons of any kind are permitted in campus housing.
- Nothing that looks like a weapon either.
- Leave them at home!



# Drugs & Alcohol Prohibited

- Freshman residence halls are dry. **N**  **ALC**  **H**  **L**
- Drug laws are also strictly enforced.
- Drug possession may result in arrest and suspension.





# MicroFridge



- Students may lease one MicroFridge per room for \$144.99 per year.
- The unit is 3 appliances in 1 – fridge, freezer and microwave.
- The MicroFridge is compact and designed to be a low energy appliance.
- Other refrigerators are not permitted in the residence halls.
- Order online at:
  - [MyMicrofridge.com](http://MyMicrofridge.com)

# Digital Television

- Cable TV is available in every room.
- The signal is a mix of digital and over the air channels.
- TV's must have both a ClearQAM and ATSC tuner.
- TV content is also available for streaming to student's devices via the campus internet network.



# Health Forms

- All health records are due to the Wellness Center by July 15.
- Meningitis is a serious health concern in communal living environments.
- Up-to-date meningitis vaccination is required (by law).
- Non-compliant students will NOT be permitted to move-in.



# Room & Meal Plan Rates

## 2019-2020 Room Rates Per Semester

### Traditional Residence Halls - Meal Plan Required

Residence Hall Double \$4,157

Residence Hall Single \$4,860

### Holly Pointe Commons - Meal Plan Required

Residence Hall Double \$4,865

Residence Hall Single \$5,212

## 2019-2020 Meal Plans Per Semester

All-Access Meal Plan & \$100 dining dollars + \$100 Rowan Bucks \$2,295

14 Meals Per Week & \$100 dining dollars + \$200 Rowan Bucks \$2,157

**ROWAN  
BUCKS**

The RowanCard provides a one card solution for identification, meal plans, and access to the student's Rowan Bucks account which can be used to make purchases without cash on and off campus.





# Leadership

- Students who want to be involved can sign up to move in early and attend leadership training!
- Move-in Wednesday, August 28<sup>th</sup>
- Volunteer with campus wide move-in the following weekend.



# Move In

- Move-in at traditional halls will be Saturday, August 31<sup>st</sup>.
- Students should arrive at their assigned hall between 8 am and 4 pm.
- Participation in University programs during this weekend is expected of all new students.
- Check your Rowan email in mid August for detailed information and updates.



# Move In

- Move-in at Holly Pointe Commons will be Friday, August 30<sup>th</sup> and Saturday, August 31<sup>st</sup>
- Move-in is by appointment.
- Early drop-&-go allows you to drop off belongings and avoid the lines of move-in day.
- Check your Rowan email in July for detailed information about the appointment sign-up process.



# Thank you!