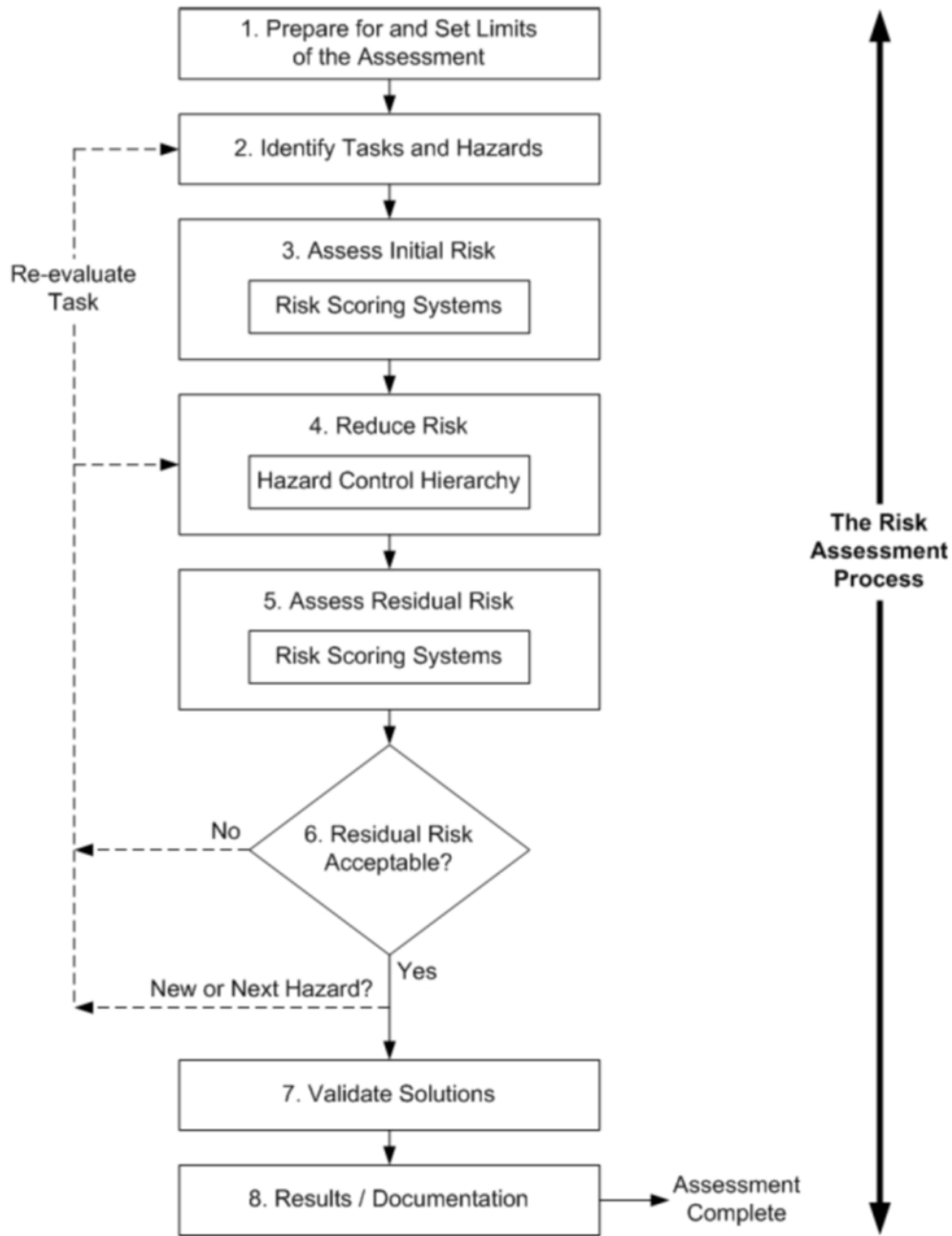


Appendix C – Risk Assessment Process Flow Chart

The flow chart on this page outlines the necessary steps for performing a successful machine risk assessment. Risk assessments should only be performed by personnel who are qualified to do so. Ideally, such personnel should be comprised of a team of qualified operators, maintenance, and EHS staff. The goal of the risk assessment is to reduce risk to an acceptable level.



From ANSI B11.0 *Safety of Machinery*